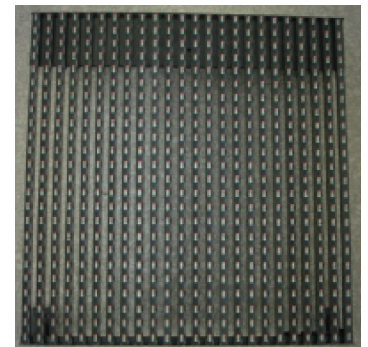
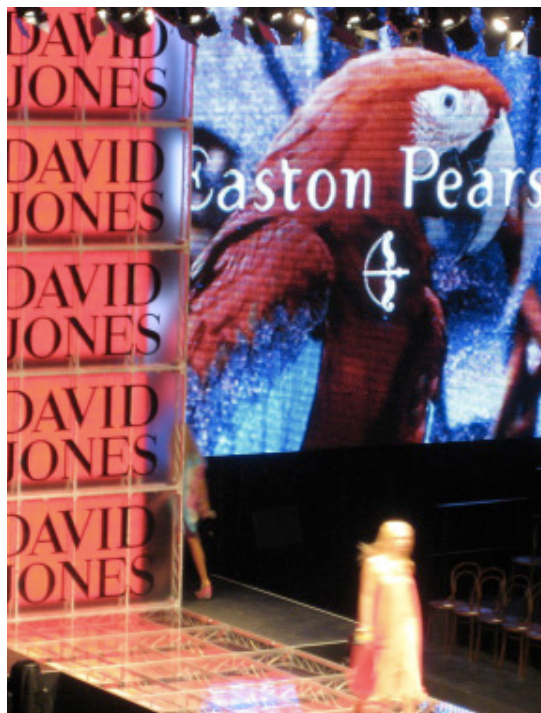




**EQUIPMENT SPECIFICATIONS:**

LED TYPE:	RGB tri-colour
PITCH:	25mm
PIXEL DENSITY:	576 (24 x 24)
POWER DRAW:	1A
LIGHT OUTPUT:	3500 nits
WEIGHT:	7kg
VIEWING ANGLE:	110° (H) 40° (V)
DIMENSIONS:	600mm x 600mm x 65mm

## Vuepix P25 LED



**The Vuepix panel is the building block of an innovative, transparent, large scale video screen solution.**

The panel's unique design, with its low profile central support makes the system 50% transparent when the screen is off as well as being extremely lightweight.

Vuepix is a high resolution display (25mm pixel pitch) that deploys rapidly and folds together for easy stacking and portability. Ideal for both permanent and temporary applications, Vuepix works well in architectural spaces, trade shows, TV stage sets, or concerts.

Vuepix is a modular system composed of individual 600mm panels. An integrated power supply and data routing unit mounts with each screen panel. Processing hardware converts a DVI, HD, SDI, s-video, component, or composite video signal that is routed to the individual panels.

This product is an outdoor-rated IP65 product.